



International Women's Monobob Rules 2021

With the exception of the regulations listed as supplementary in this document, all regulations of the current International Bobsleigh Rules 2021 apply equally to the Women's Monobob discipline and are basically based on the two-woman bobsleigh discipline.

1. **Test competitions and International Training Period (1.4 = according to International Bobsleigh Rules)**

For the participation in the international training periods the same quota regulation applies as for the participation in the World Cup of the current season.

All other nations may participate with one female pilot, provided that this pilot has taken part in and been ranked in a minimum of 5 IBSF competitions on a minimum of three different tracks in the course of the previous 24 months.

For these 5 IBSF competitions both the 2-woman Bobsleigh results and the Monobob results of a female pilot will be taken into account. If a female pilot has fulfilled this participation criteria by October 1st of the respective season, it remains valid for the entire current season.

During the training period in preparation for the Olympic Winter Games, the organizers offer the runs upon payment of the following amounts: maximum € 15,-- for each Monobob run.

2. **Right to participate in competitions (4)**

Women's Monobob World Series

In the seasons 2021/2022 all nations may participate in the Women's Monobob World Series as part of the World Cup series according to their respective World Cup quota and the respective points will be assigned. Participation is allowed only for pilots who have taken part in, and been ranked in, a minimum of 5 IBSF competitions on a minimum of 3 different tracks in the course of the previous 24 months (5-3-2). For the Women's Monobob the participation in IBSF 2-woman races can be counted for the five (5) races on three (3) different tracks.

Pilots who fulfill the criteria 5-3-2 just in Monobob may only participate in the Monobob event which is held during the World Cup series.

In the North American Cup and Europe Cup, a maximum of 4 female pilots per nation may participate in the race series and the respective points will be assigned.

For the 2021/22 season the following Nations will be granted a Women's Monobob spot at the Women's Monobob World Series conducted during the BMW IBSF Bob & Skeleton World Cup Series 2021/22:

Due to the IBSF Executive Committee decision to increase the Top 35 to Top 40 for the World Cup Quota in the 2021/22 season these three Nations receive an additional quota spot.

These Nations must fulfill the 5-3-2 criteria for Women's Monobob in order to compete in the 2021/22 season in the Women's Monobob World Series conducted during the BMW IBSF Bob & Skeleton World Cup.

Season 2021/22

WC/quotas 2021/22	WC	Monobob spot	Additional Monobob spot
3	GER	3	
3	RUS	3	
3	CAN	3	
3	USA	3	
2	CHN	2	
2	SUI	2	
2	ITA	2	
1	AUT	1	
2	BEL	2	
2	ROU	2	
1	GBR	1	
1	FRA	1	
2	AUS	2	
1	POL	1	
1	KOR	1	
	COL		1
	LIE		1
	NED		1
	NOR		1
	SVK		1
	TPE		1
	LAT		1
	BRA		1
	JPN		1
	UKR		1
	NGR		1

3. The Competition (10)

3.1. Starting order during training

The starting order of the participating nations shall be drawn at the first team captains' meeting. If possible, the training is run according to "nation groups".

The following starting order applies to events in which the official training takes place for 2 or 3 days:

1st day: From nation 1 to the end

2nd day: From the end to nation 1

3rd day: By individual according to the 2-woman Bobsleigh IBSF ranking list and the Women's Monobob discipline IBSF ranking list (based on the best-placed pilots present/starting). The 2-woman Bobsleigh discipline has priority over Women's Monobob.

During the Olympic Games the starting order for Women's Monobob and 2-woman Bobsleigh will be defined on the basis of the IBSF ranking list of each of these disciplines.

3.2. Women's Monobob World Series during World Cup events

The starting order of the participating nations shall be drawn by the World Cup coordinator at the end of the entry term and shall be communicated to both the Race Organizer and the participating nations prior to the first team captains' meeting. Nevertheless, the team captains have to be present at the first team captains' meeting in person. If a nation is not present, or in case of a late entry, the athletes of the nation concerned shall automatically start at the end of the field during the first and second day.

3.3. The Race

The IBSF discipline ranking list for two-woman bobsleigh of the 2019/2020 season is used to determine the starting order for the 2021/2022 season for the Women's Monobob World Series, in the context of the World Cup, North American Cup and Europe Cup races at the respective first race of the new season. Female pilots without points will be drawn at the end of the field.

If the North American Cup and/or Europe Cup race series start before the World Cup race series, the current discipline ranking of the race series will be used to determine the starting order for the second and subsequent races.

The number of races to be considered for the Women's Monobob IBSF discipline ranking list is equal to the number of Women's Monobob races held during the World Cup race series at that time.

4. Material and equipment (10.8)

Bob (10.8.1)

At all official IBSF Women's Monobob races listed in the IBSF calendar (Olympic Winter Games, World Championships, World Cups, European Cups, North American Cups, International races, Women's Monobob World Series) only the IBSF standardized Monobob provided by iXent will be allowed.

The approval is based on the original measurements and the original drawings of the manufacturer.

With the exceptions listed below, all spare parts will be produced by the sled manufacturer iXent and will be available for purchase. Each of them must carry the manufacturer's identification mark. For example, springs in the division may only be replaced or exchanged by any springs offered by the manufacturer; the front axle leaf spring may only be replaced or exchanged by the offered front axle leaf spring of the manufacturer.

Exceptions:

All repair, modification and/or maintenance work specified in Appendix 1 to these Rules is permitted using original spare parts.

Runners (10.8.2)

For the Women's Monobob the same runner specifications apply as for the 2-woman bobsleigh discipline.

Weight (10.14)

- **Minimum Weight:**
 - Sled including the runners and without the athlete: **163 kg** (inclusive OMEGA measuring system with all components).
- **Maximum Weight:**
 - Sled including the athlete, the runners and the other equipment: **248 kg**

Only the additional weights provided by iXent are permitted as ballast weight.

5. IBSF (11.1 & 11.2)

11.1 Ranking Lists of the Race series

Season 2021/2022: For the Women's Monobob World Series an overall ranking list will be issued at the end of the season, whereby the best 5 results of each pilot are added up.

11.2 IBSF Ranking List

Season 2021/2022:

For the Women's Bobsleigh IBSF Combined Ranking List the number of races counted for the two-woman bobsleigh are based on the number of two-woman bobsleigh World Cup races carried out at that time in the respective season as well as a maximum of five Women's Monobob races held up at that time in the respective season.

6. IBSF Ranking List – Points – Season 2021/2022 (11.3)

WOMEN'S MONOBOB WORLD SERIES (WC)		WOMEN'S MONOBOB WORLD SERIES (NAC/EC)	
Rank	Points	Rank	Points
1	225	1	120
2	210	2	110
3	200	3	102
4	192	4	96
5	184	5	92
6	176	6	88
7	168	7	84
8	160	8	80
9	152	9	76
10	144	10	72
11	136	11	68
12	128	12	68
13	120	13	68
14	112	14	68
15	104	15	68
16	96	16	68
17	88	17	68
18	80	18	68
19	74	19	68
20	68	20	68
21	62	21	68
22	56	22	68
23	50	23	68
24	45	24	68
25	40	25	68
26	36	26	68
27	32	27	68
28	28	28	68
29	24	29	68
30	20	30	68

7. Final Provisions

Entry into force

This edition shall enter into force on 1 October 2021.

APPENDIX 1

Complete list of repair, modification and/or maintenance work using the original spare parts.

- The original bolts of the connection between the frame and the cowling (designation: M12x40mm), see Fig. 1, placed vertically, may be replaced by bolts with a thread diameter of M12 having a minimum length of 40mm, in order to grant a continuous screw connection. Teams are allowed to drill through the connection between the frame and the cowling.
- Teams are allowed to sharpen the brake tines.
- Three additional holes, each 15 mm apart, may be drilled and threaded in the steering lever. See Fig. 2.
- The suspension of the steering cables may be individually adapted. Besides the original steering handles, custom-made steering handles may also be used.
- Any work that changes the aerodynamics is prohibited.
- Damages to the cowling, e.g. after a crash, may be repaired by the teams.
- Pilots may use their own seat shells. No additional holes must be drilled in the frame to fix the individual seat shell.
- Rubber or rubber-like material may be used instead of metal inserts at the cowling connections - 4 at the front frame and 4 at the rear frame.
- Original steering ropes may be replaced by own steering ropes.
- For the purpose of returning the runners in a neutral position, rubber or rubber-like materials may be used in the steering mechanism. Also the original rubber may be replaced by own rubber.

Drawings

Fig.1

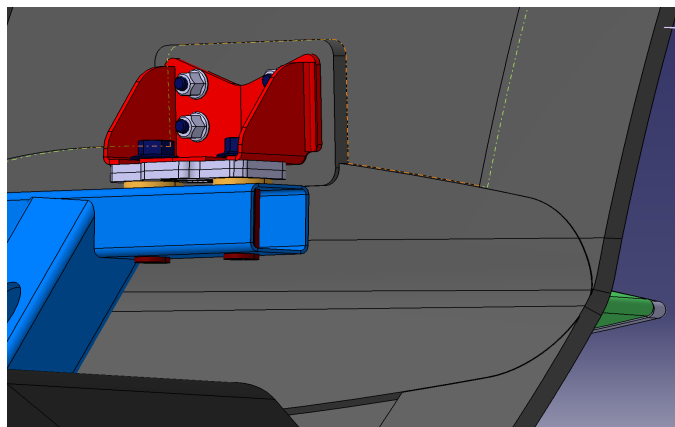
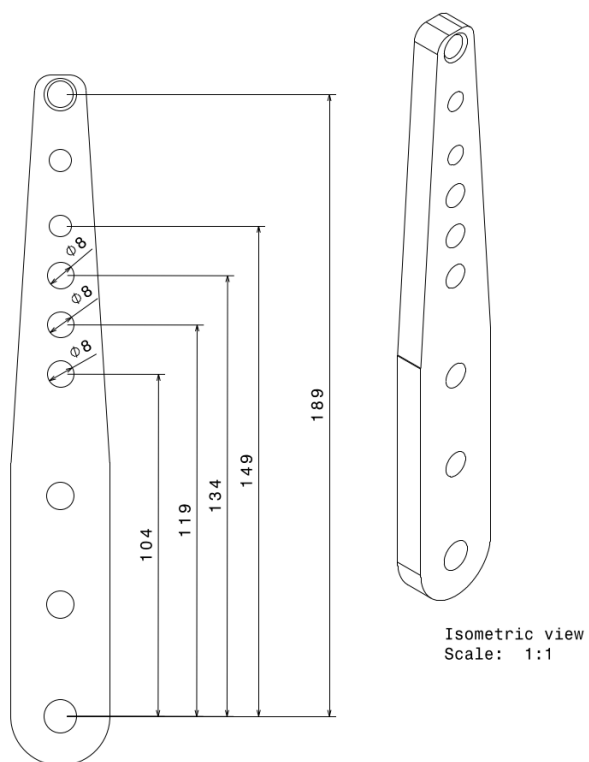


Fig. 2



Bottom view
Scale: 1:1

Isometric view
Scale: 1:1

All Dimensions in mm.
Not dimensioned geometry
according to IBSF Monobob
series production part.